

Timber and Forestry Training College



SMALL SAWMILLS TRAINING



Background

Papua New Guinea, for the last twenty years has seen a large number of portable or mobile mills sold to landowner groups and individuals. Unfortunately the sustainability of these mills is doubtful and in practice most mills operate effectively for less than one year due to lack of mechanical ability, difficulty to obtain spare parts, poor understanding method of operating mills, poor quality of timber product and lack of training provided.

In the last ten years, a host of new mill designs from overseas and the redesign of old models couple with the recognition that landowners should be able to utilize their own forest resource, has meant an increase in small sawmills sold in PNG. They include: Forester mills, Lewisaw, Lucas mill, McQuarrie Forest mill, Mahoe mill, Mighty mill, Mobile Dimension mill, Peterson mill, Timbersaw range (Token, Zea, Solite), Woodmizer and many more.

The Timber and Forestry Training College recognized the need to provide training for the small sawmills sector and with the cooperation of the companies selling mills in PNG, have setup training mills at the college site in Lae. Since then regular courses have been conducted to try and meet the needs of this developing sector of the PNG forest industry.



Small Sawmill Advisory Committee

The College has a management advisory board called **THE NATIONAL FORESTRY TRADE TRAINING BOARD**. Three committees have been established to advise this board and one of them is Small Sawmill Advisory Committee. This committee is made up of a membership from all parties involved in small sawmill in PNG.

Towards the end of 1998, the committee discussed the desperate need to provide better training to landowners in the operation of small sawmills and the need to fund training to allow this training to proceed.

Staffing

The college has three full time small sawmills instructors with, in addition, the small engines servicing mechanic who assists with the maintenance training and onsite work.

In addition to the formal courses, the college also offers an on site service for training, repairs & maintenance and also operates a small engines servicing center for the repair of engines.



Courses

The courses offered are as follows:

- Small saw mills operation
- Chain saw operation
- Chain saw mechanics
- Operations of chainsaw mills
- Saw doctoring for small sawmills
- Coconut timber milling
- Log scaling & volume calculation
- Timber pricing & sales
- Timber treatment for village projects
- Felling & Preparation of logs for small saw mills
- Timber grading for small saw mills
- Book keeping & management for small saw mills.

Current Fees

The courses offered by the college are broken down into two categories.

- Courses at TFTC with full boarding, lodging & tuition per week is K275.00
- Onsite Training with payment of all airfares & onsite costs. A daily fee for the Instructor of K50.00 per day



The College

The Timber & Forestry Training College at Lae is situated on a very pleasant 7.5ha site, 3km from the city's main shopping centre. The college was established as a bilateral aid project between PNG & NZ governments and commenced its formal training in 1978.

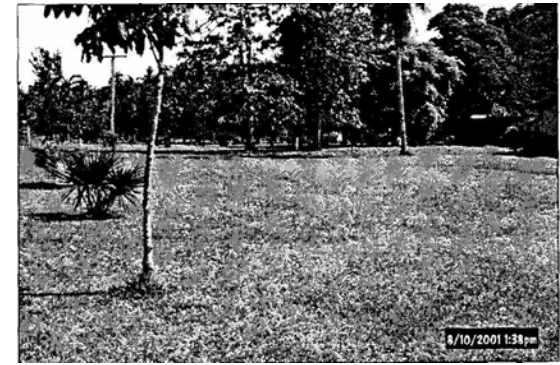
It aims to provide Technical Training for Papua New Guineans & other Pacific Islanders in all aspects of primary & secondary timber utilization. It is administered by the PNG University of Technology.

The college offers a friendly, pleasant environment for study and provides good and permanent accommodations for up to 100 students, 45 rooms for males, 15 rooms for females and mess facilities with ample comfortable living conditions including students' common room with cable TV.

The college has three lecture rooms with all modern teaching aids available for classroom instruction and a library, which has a collection of books, fiction and non fiction, periodicals and offers the student an ideal place for reading. The library opens from 8.00 am to 4.00 pm every Monday to Friday.

Public Motor Vehicle (PMV) travels frequently to and from the college, 7 days a week for 50 toea (K0.50) per trip anyway in town.

For more information, please contact the Principal or the Registrar on the information provided.



Timber College

The training facilities at the college are excellent and include a production sawmill with band and circular saws, a well equip saw maintenance workshop and a re manufacturing workshop with extensive equipment for training in wood machining.

All machinery and equipment is of advance design and produce by world leading manufacturers.

The facilities in the college include:

- Timber treatment plant
- Drying kiln
- Small sawmills
- Log harvesting machinery

Some of the products for TFTC include Rough sawn timber, Dressed all round timber, Treated timber, treated poles post, Mouldings treated, Kiln Dried timbers, Weatherboards, Veranda Decking, T&G Flooring, Quads, Window sills, Door frames, Dowels, Picture Framing and others.

The college can also do special orders upon customer request.

So if you need more information about the college and its services, please contact the Principal or the Registrar on the details provided below.

PNG University of Technology
Timber & Forestry Training College
Bumbu Campus

P.O.BOX 2132 LAE. 411
MOROBE PROVINCE
PAPUA NEW GUINEA

Phone: (675)-472-4600
Fax: (675)-472-3586
Email: tftc@global.net.pg
Website: www.tftc.org