

# Timber and Forestry Training College



## COLLEGE FACILITIES



## COLLEGE FACILITIES

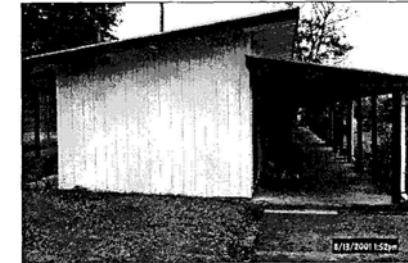
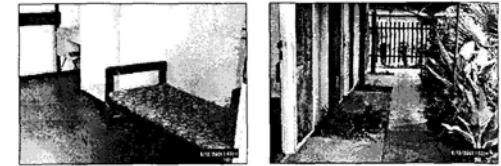
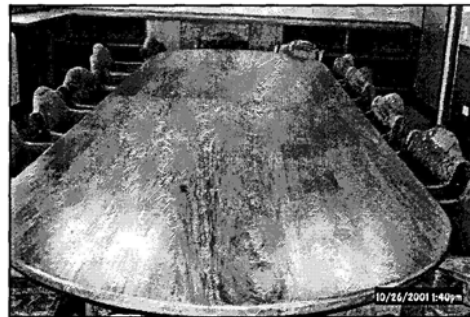
### Conference room

The college offers a perfect venue for conferences seminars and workshops. The conference room has:

- Overhead projector
- Wall mounted white board
- Ektarpro slide projector
- Video & TV Screen
- Tile floorings
- Teak walling (fully vanished)
- Air Conditioning
- Water Cooler System

The rate for the use of the conference room is:

K150.00 per day including morning & afternoon tea.



### Accommodation

The college has and provides the cheapest means of accommodation in the whole of the City of LAE.

The rooms are:

- Double or single rooms
- Single size beds
- Has study table
- Common TV
- Very Spacious

Basic cost for the use of the rooms are:

K45.00 per person/day with (breakfast, lunch & dinner)

K30.00 per person/day without meals.

**Note: Bond Fee of K50.00 (Refundable)**

## Other Facilities

The college also has other facilities which can also be made available to interested clients.

They are sporting facilities which include:

- Basketball Court
- Tennis Court
- Rugby Oval
- Soccer Oval
- Cricket Pitch
- Lawn Tennis

Basic cost for the use of the sporting facilities are:

K30.00 per year

- The college also has three lecture rooms with all modern teaching aids available for classroom instructions.
- A library which has a good stock of technical books and other resource material, magazines and a large fiction section for general reading.
- A health clinic is available on site.
- Meals are provided by Unitech caterers which are of very good standards.



## The College...

The College is located right in the center of Lae City, a few minutes drive to the main shopping center, and the main market.

The college offers a friendly, pleasant environment for visitors who are planning a short stay in Lae, Our accommodation rate is very affordable and cheapest in town.

For those who are planning for conferences and seminars, our facilities are built from our own workshops and the products are none other than the best, which makes the environment very relaxing and comfortable.

The college also has a library, which has a collection of books, fiction and non fiction, periodicals and offers the visitor an ideal place to past the time. The library opens from 8.00 am to 4.00 pm Monday to Fridays.

Public Motor Vehicle (PMV) travels frequently to and from the college, 7 days a week for 50 toea (K0.50) per trip anyway in town.

For reservations, please contact the



registrar on the information provided.

## Timber College

The college offers a range of courses from Saw Doctoring, Furniture Manufacturing, Wood Machining, Small Sawmills Training, Chainsaw Training and other services.

Some of the products for TFTC include Rough sawn timber, Dressed all round timber, Treated timber, treated poles/post, Mouldings treated, Kiln Dried timbers, Weatherboards, Veranda Decking, T&G Flooring, Quads, Window sills, Door frames, Dowels, Picture Framing and others.

The college can also do special orders upon customer request with given dimensions and diagrams.

So if you need more information about the college and its services, please contact the Principal or the Registrar on the details provided below.

PNG University of Technology

### Timber & Forestry Training College

Bumbu Campus

P.O.BOX 2132

LAE. 411

MOROBE PROVINCE

PAPUA NEW GUINEA

Phone: (675)-472-4600

Fax: (675)-472-3586

Email: [tftc@global.net.pg](mailto:tftc@global.net.pg)

Website: [www.tftc.org](http://www.tftc.org)